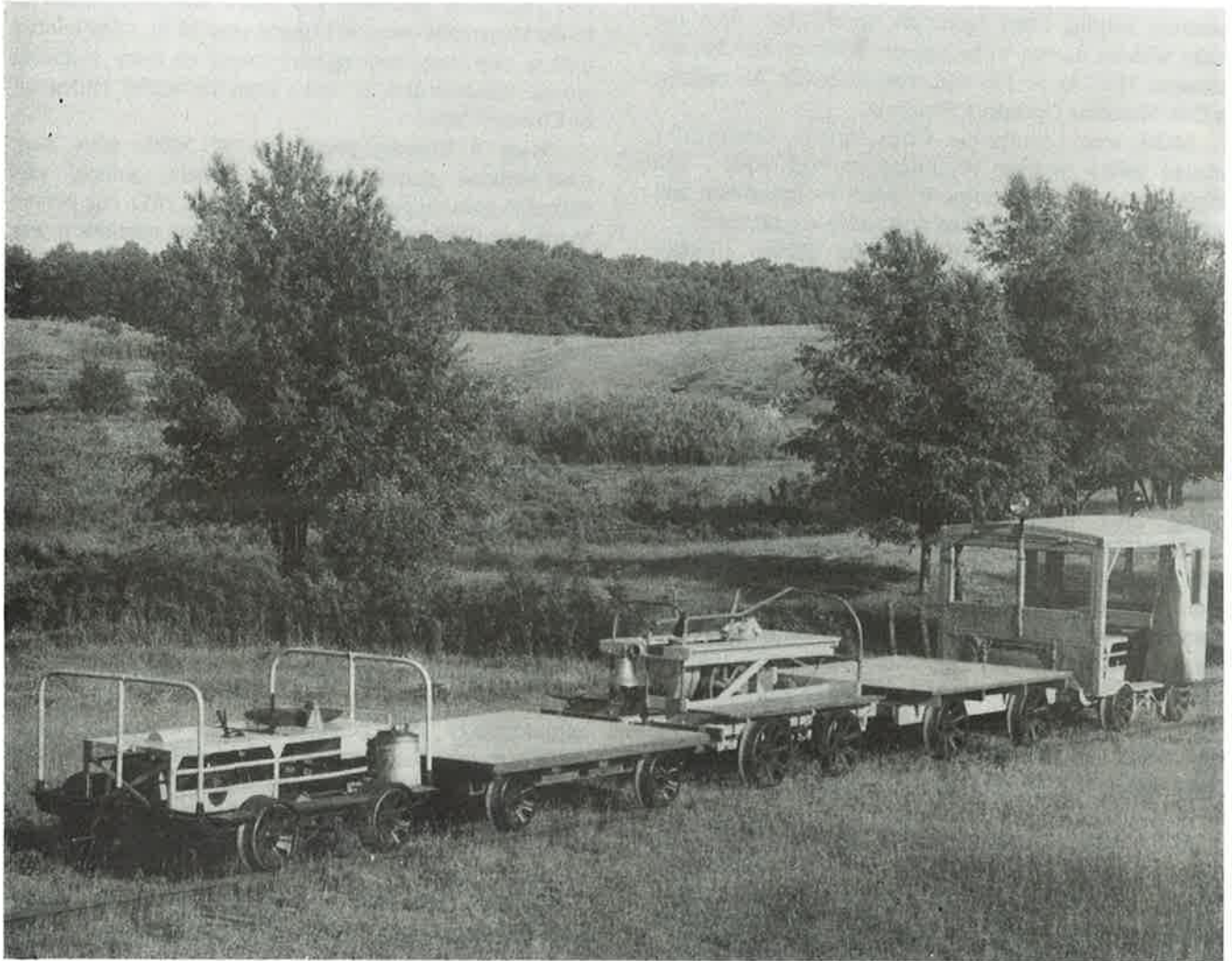
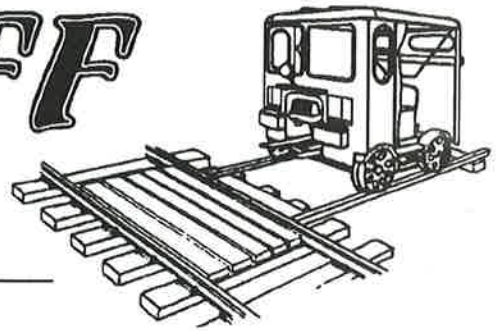


THE SETOFF

THE OFFICIAL PUBLICATION OF THE NORTH AMERICAN
RAILCAR OPERATORS ASSOCIATION (NARCOA)

March/April 1999 Volume 13 – No 1



Around 1954, a motorcar meet was held by some enthusiasts from Toledo, Ohio on the Bankers Cutoff, an abandoned NYC line in Hillsdale County, Michigan. Motorcars in attendance included: (left) ex-Toledo Terminal RR 12 hp Buda equipped with a custom-built 2-axle chain drive, (center) an ex-Toledo & Western Railroad Fairmont with 20" wheels (note the brass bell which was added), and (right) an ex-Toledo Terminal Railroad 8 hp Buda. The two trailer cars were home built.

(Charley Sheets Collection)

Inside:

Sierra Railroad 2 From The President. 3 Want Ads..... 4 Excursions..... 6

Sierra Railroad Journal

by Wayne Parsons

On Saturday, April 17th, forty-five cars turned out for the Sierra Railroad mainline at Oakdale, CA. The set-on was at the East End of the yard using the Pedersen crossing of Sierra road. With everyone's help the set-on and inspections, beginning at 6:15 AM, went quickly with operators helping other operators wrestle cars onto the tracks without having to be asked. Most of the cars are Fairmont MT-14s or 19s with one Fairmont A6 making its first Motorcar Operators West run.

MOW meet coordinator, Chris Ogilvie, conducted a detailed safety meeting beginning at 9:15 AM. The original plan included going 40 miles to Jamestown and touring the well preserved and still active roundhouse.

However, we learned that the Snider Lumber Company had the mainline blocked at Chinese with wood chip cars. We'll go as far as Chinese and return. There'll be a second run in the afternoon for anyone wanting to go. We were off by 10 AM operating in four groups spaced about a minute apart. The weather is bright and clear with temperatures reaching the high 70's.

The Sierra RR passes through grazing land as it leaves Oakdale. Past the wye at Cooperstown (mp 19) it enters rolling hills dotted with the hemispherical-shaped California Oak trees. The Sierra carried passengers until 1938 including tourists bound for Yosemite Valley who made connections at several points along the line. In fact, recent track upgrades are partially due to the need to meet passenger standards for the excursion trains out of Jamestown. The Sierra was and still is primarily a freight road. At Cooperstown in the 1920's, helper locomotives were added to trains hauling gravel from pits (located 3 miles north of our set-on point) along the Stanislaus River.

Hetch Hetchy Junction at (mp 26) had warehouses, shops, an engine house, several sidings and a passenger station. Then in 1921, eight mile branches were built at both Rosasco (mp 25.5) for the Don Pedro Dam and at Hill Valley/McCormick (mp 31.5) for the Melones Dam.

As the scenery transitions from farms to foothills, I notice a small spring stream along the tracks and imagine what this area was like during the gold rush. Remembering that gold was first discovered north of here on the American River, I imagine an early Argonaut coming up this route in May 1848. Following the stream where only sunlight glistens today, that miner might find \$200 a day in gold with just a pick and knife.

Today, it's nature's treasure that lies along the track. Flowers like the orange California Poppy, yellow Sierra Sedum and Wild Blue Flax provide color among the green grass carpeting the hills. On a fence post sits a Red Winged Blackbird. In a shallow pond a pair of white Great Egrets feed. Overhead fly two mallard ducks, and an American Avocet with its curved beak wades among Cat-Tails on the edge of a marsh hard by (next to) the

tracks. From the rock ballast spring frightened Killdeer birds with black bands around their necks. They feign injury in a distraction display to lure predators away from their nests. Gene Volz reports seeing meadowlarks with their yellow throats. Gene also saw a white owl sitting atop a tall pole. It was so white, "I did not believe it could be a barn owl." Barn owls are often mistaken for Snowy Owls, particularly when flying. It's possible a winter food shortage could have pushed a Snowy Owl this far south.

The tail end group gets to the Porta-Potty at Keystone (mp 29) shortly past Noon and after a short stop pushes on to the turnaround point at Chinese (mp 35.1). The lumber mill is very busy with railcars stored on every available siding. Chinese gets its' name from the nearby settlement of Chinese Camp.

Here a Chinese population of 5000, who were discriminated against by other miners, worked less desirable gold diggings. In California in 1852 one person in ten was Chinese. In some of the mining counties it was three out of ten. To discourage immigration by Chinese, a foreign miners tax was enacted. Well into the 1860's nearly a quarter of the state's receipts would be from this tax.

We returned to Keystone for lunch and at 1:45 PM start downhill. The afternoon sun is warm and the sky cloudless. At the Hetch Hetchy Jct. rest stop, C.E. "Tod" Hill shares books with 1920 photos showing the station and yards. We're back in Oakdale at 4:00 PM where thirty-five cars set-off.

At 5:00 PM ten cars start back uphill. The smaller group sets a good pace. Lori Volz mentors Donna Snyder and the smaller group provides the perfect setting for her first time at the throttle.

Our railroad escort today is Joe Nemmer riding his 1942 Buda motorcar. The Buda is a heavy car, approximately 1500 pounds, and has a slightly longer wheelbase than the Fairmonts. Joe, with a hard hat and bib overalls, along with his passengers on the open car look just like a section gang headed to work! On the lead car they see a different range of wildlife during this evening mealtime. In the valley near Warnerville (mp15.9) Joe identifies a Saw-Whet Owl by its pleasant face and white body with reddish-brown streaks. Most spectacular of all is a Ring-necked Pheasant with its' iridescent green-black head and rich golden mottled flanks. Above Canyon Tank (mp 22.8) a Bobcat is seen off to the left while Red-tailed Hawks circle overhead. Both are looking for rodents.

Reaching Keystone at 6:15 PM we must pause five minutes for repairs to my car which has gone dead without warning at the road crossing. I discover a fuse holder under the ignition switch that has deteriorated with age. A set of clip leads from the tool bag wires around the broken plastic fuse holder. My thanks to Don Breithbarth and Gil Dominquez for their help. This is the only "breakdown" of the entire day.

The run back downhill is as fine a way to spend an evening. I take off the intercom headset to experience the full 90-decibel sound level. Leaning forward in the seat

with my head cocked just so, I listen to the engine judging its' every aspect trying to decide what maintenance is needed before the next speeder trip. I can find no fault either in the engine or in this fine day in the Sierra foothills. We're back at Oakdale and safely off the rails by 8:00 PM.

Thanks to everyone who helped with the event and thank you Sierra Railroad for hosting Motorcar Operators West!

Editor Needed

By Stan R. Conyer, NARCOA President

The Setoff is in need of a new editor. Our present editor, Bill Hurtig, has been unable to keep our newsletter on schedule due to family and work obligations. Bill is a minister and the demands of his church have had to take priority over his editor job.

Ernie Jeschke, our present Publisher and Circulation Manager, will become the interim Editor until a new Editor can be found and is up and running. The new Editor should have a computer with e-mail capability as much of the newsletter is done on a computer. Other than a computer, all that is needed is the desire to keep The Setoff a quality and timely publication. Some experience in this line of work would be preferred but not absolutely necessary. The deadline for material submitted to The Setoff is the 15th of each odd month. It has been our goal for the Editor to have the material to the Publisher by the 25th and the newsletter in the hands of the members by the middle of the following month.

If we can do this, the time sensitive material (excursion announcements and the want ads) will once again be out to the members in time to be useful. Ernie will be publishing an abbreviated version of The Setoff with emphasis on time sensitive material and NARCOA business until our new Editor is selected and trained.

I am sorry for the inconvenience regular newsletter has caused in the past and rest assured I will not rest until NARCOA can once again return The Setoff to the quality and timely publication our membership has come to expect. We all appreciate the hard work all of the people involved with The Setoff have done in the past and will get it back on track as soon as possible.

Anyone who thinks he or she might be interested in The Setoff Editor position should contact me, Stan Conyer, NARCOA President, at (812) 342-0565.

**Please submit materials
for the next issue of
THE SETOFF
by June 15th
Send to:
Ernie Jeschke
SETOFF Editor 4106 N. Adrian Hwy.
Adrian, MI 49221**

Guidelines for Submitting Materials For Publication in *THE SETOFF*

1. Our editorial policy is to cheerfully publish in *THE SETOFF* all materials received, although they may be subject to editing for space considerations.
2. Photos and materials submitted for publication in *THE SETOFF* cannot be returned because they are archived.
3. We cannot publish copyrighted materials such as photos; posters, cartoons or articles without written permission from the author or publisher. The sender must provide written permission at the time of submission.
4. Excursion stories, technical articles, and lengthy submissions should be typed or printed. Ads, meet notices, and short articles may be handwritten. Please include your phone number with your submission in case we need to ask you questions about something we don't understand.
5. Photos should be either black and white or sharp color photos. Please label the back of the picture as to its subject matter and who took the picture. Please do not send slides.
6. Send materials to *THE SETOFF* editor by the deadline, the 15th of each odd-numbered month (January, March, May, July, September, November)

THE SETOFF

Volume 13 Number 1

THE SETOFF Editor Ernie Jeschke
4106 N. Adrian Hwy.
Adrian, MI 49221
Ejeske@tc3net.com
FAX 517-265-6749

SETOFF Contributing Dick Ray
Editor 5 Hemlock Place
Randolph, NJ 07869
Ray_r@rocketmail.com

NARCOA Membership Joel Williams
Secretary Box 82
Greendell, NJ 07839
Joelwilliams@lucent.com
Phone 908-852-6294
FAX 908-852-9185

THE SETOFF is the official publication of the North American Railcar Operators Association (NARCOA) and is published bimonthly to promote safe operation of railroad motorcars and to encourage fellowship and exchange of information among motorcar enthusiasts. Membership in NARCOA, which includes a subscription to *THE SETOFF*, is \$20.00 per year and is available from Membership Secretary, Joel Williams. Please address all membership inquiries to Joel at the above address.

Visit NARCOA's site on the World Wide Web. The address is:
<http://www.narcoa.org>



Want Ads

Editor's Note: *THE SETOFF* is happy to print all ads received from members. Send ads directly to: Ernie Jeschke - 4106 N. Adrian Hwy. - Adrian, MI 49221. FAX 517-265-6749 or email: ejeske@tc3net.com There is no charge for placing an ad; please send us yours. If you want an ad to run for more than one issue, please indicate how many issues. No full-page ads are accepted. Use the present issue's ads as a guide. Thank You!

FOR SALE: Motor car theme caps. Over 50 different designs. Many new cap colors, including black. \$10 for 1st, and \$8 each additional cap. Shipping included. Get your car on a cap with Fairmont logo. Self stick Fairmont vinyl logos, 10" long, black or red, \$8 each, two for \$15. Post paid. New items include bandanas, flags, buttons, wall switch plates, and more. New brochure is ten pages +, all color. Get your copy for just one dollar (refundable), and receive coupons for additional savings and gifts. Dallas McDowell, 5253 Hattie Nolan Rd, Middleburg Fla 32068-3135 (904) 291-9731

FOR SALE - 1 set of 16" RR (push car) wheels on axles. 1 pair on straight axles, 1 pair on differential axle. B.O. P.R.R. Co., 161 West Farms Road. Farmingdale NJ 07727-3555.

FOR SALE - Fairmont MT-19, S.C.L. 842. Restored 1994, new glass, paint, sprockets, chain, side/rear curtains and engine overhauled. Used lovingly and stored under cover. Looks and runs good. \$2,500. Trailer built to carry 2 motorcars \$350. Darrell Crawford, (843) 795-6988, Charleston SC

FOR SALE - Drive axles for late model MT-19-A's and all MT-19-B's. Same as Fairmont #127962N, except using 4340 steel, hardened to Rockwell C 38-40. \$250 each including packaging and UPS shipping in the US. Tom Norman, (406) 722-4961.

FOR SALE - Fairmont M-19-AA Engine rebuilt 1991, have receipts for parts \$900. Cab, lights front, wipers, red stop blinkers, beacon on roof electric air horns, about 500 miles since rebuild. Good seats, curtains starting to fray. Runs Great. \$3,000. Bruce Saylor, 2836 Leon Ave. Audubon PA 19403 (610) 666-6572

FOR SALE - Hi-Rail trucks: 1989 Chevy Suburban, 87,000 miles a/c \$4,500. 1988 chevy 4 door pickup, 105,000 miles \$3,500. Both trucks have automatic, strobes, spotlights, Fairmont 0307 railgear. Good

running condition. Ideal for shortline. J. Ciccone, 1216 Pleasure Ave.. Ocean City NJ 08226. (609) 399-0047.

FOR SALE - Track Charts and Profiles: Railroad issue map books of graphic and technical information highlighting track arrangements, gradients, curve degrees, bridges, signals, facilities, stations, crossings, abandoned lines, etc. Shortlines to major roads, past and present. Large catalog: \$2. Dave Cramer, 2114 Sheridan Drive, Madison WI 53704.

FOR SALE - (4) Complete wheelsets with 20" diameter pressed steel wheels. In good operable condition. All four are Buda Manufacture (as close as can be determined) with wheels riveted to hubs. Perfect for a hand pumpcar reconstruction project. \$500 each, OBO. Or will trade in kind for Fairmont wheelsets with 1 11/16" or 1 15/16" diameter axle, 16" diameter wheel, or A-5, A-6 or A-8 motorcar parts. Also have two gasoline-engine powered, flexible shaft portable rail grinders for sale. Call for details. Contact: David M. Williamson, 9793 Snyder Church Road, Baltimore, OH 43105, (740) 862-5810 home, or (740) 659-2999 work, (740) 659-2348 fax.

FOR SALE Fairmont M-19 ex-Monon #150 95% complete restoration. Needs coil mounted, exhaust mounted and wiring finished. Car has new brakes, seats, wood, lift handles and paint. Narcoa legal lights. Have complete spare carb, 2 wood case 6volt coils and 1 delco 12v coil. Don't want to, but must sell. \$1850 OBO. Car is located in northern Indiana. Dennis Rex (219) 594-2272 after 5pm.

FOR SALE New Motorola GP-68 portable radios with rapid charger, battery, 20 channels (UHF or VHF) keypad, programmable, scanning and antenna. VHF output is 5 watts and the UHF is 4 watts. Comes with a 2 year warranty. All new in the box for \$379.00. You choose your frequencies. Please reply to: Huntcomm, Inc.,C/O Steve Hunt. Phone (336) 746-5853.

FOR SALE Four M63334 insulator sets which each include the fiber cone and washer, and a steel washer. - \$26.50 each. John Reynolds, 45 Northview Dr., Hanover, PA 17331 (717) 632-4157 Work Phone: (410) 765-4088 FAX: (410) 765-4251

FOR SALE I have six (6) 2-way handheld radios for sale, all have the NARCOA assigned frequency installed (151.625 Mhz) and all are new, in the box, never been used. Each radio comes complete with antenna, battery, and charger. These are 2 channel units, with only our channel installed, but expandable. VERY low priced! 904-246-4408 Area 5 Miller Norton.

FOR SALE: Final call for anyone interested in a turntable for your A6. I will be having some (6 so far) made soon. Also can have replacement hydraulic cylinders made if you need one for your A6 turntable. E-mail for details bestalli@eastnet.ecu.edu Tom Stallings Pinetops, NC (252) 827-4693

FOR SALE: 2 Cars For Sale: Fairbanks Morse Sheffield 40-B Ex. O & W Car, Restored 1986. Needs Some Work On The Wood, New Friction Wheel and Regult Mag. Winner of the 1988 NARCOA Fall Meet Acceleration Contest At Arkville - \$1,500. Fairbaks Morse Model 51, (??) Open Car, All There, 2 Cycle Single Cyl. Has Original Bell With Rack/Pinion Setup! \$800. Let Me Know If You Are Interested In Any Of This Stuff, Spring's Coming And Its Time To Shine The Wheels! Thanks. Charles Hulsizer, RR7 Box 117, Sherow Road, Pleasant Valley, NY 12569 (914) 635-3662 After 7 p.m.

FOR SALE: One Fairbanks Morse 55D Section Car, totally restored with rebuilt engine. Using original parts. Car was built in the 30's, located in MS. Has some extras. Asking \$3,500 US dollars. Retrofit air filters for Fairmont engines. Uses foam element ... not oiled screen. Tested on M-9's M-19's etc. \$20.00+shipping. Exhaust system kits for Fairmont cars, real quiet, you can hear carb checks tapping at idle. Preassembled, just install, put some spray foam on wheels and you can hear yourself think! Price on request, "Price varies by car" For info contact Robert Riley at (601) 982-8513.

FOR SALE - M9-G-2 windscreen, roof, side panels, rear support, windshield wipers, battery/tool boxes, 12 V strobe, and all hardware. Very good condition, no dents. Removed from Southern Rwy. MC 5402, delivered 8-56. Kelley Rick, The Mill Repair Co. (713) 665-0032. Fax (713) 665-0030 \$750 (US)

FOR SALE: Sheffield-40-B Eng 18126 Shop 3895, Fairbanks Morse & Co., Chicago, Ill. Crank Start, Twin Cylinder, Horizontal Twin Engine, 6'3" high, 7'7" long, 5' wide. Car is located in Northern New York. Price \$2,000.00 Pictures can be viewed at <http://www.angelfire.com/ny/12inchers/page19.html> <http://www.angelfire.com/ny/12inchers/page17.html> <http://www.angelfire.com/ny/12inchers/page12.html> Please Contact Directly: Steve Premo, Van Buren Rd., Gouverneur, New York 13642-3116

FOR SALE: I have a Fairmont A-3 motorcar with a Waukesha ICK motor for sale. The car only requires minor work on the throttle linkage and fuel line to have it operational. NO cab, 12 volt alternator equipped, however car is a hand crank/start version. Two boxes of spare parts go with the car. \$1,500 FOB Blue Ridge, Ga. Contact: Hugh Cain 510 Austin Street Norfolk, Va. 23503.

FOR SALE - 40-B Fairbanks Morse Railway Motor Car without engine, \$800. Fairbanks Morse Engine parts for 3 three engines, 15 boxes, \$300. 6" x 8" trailer (wooden) for motorcar, \$350. Three complete sets of Railway Station semaphores. They will need repairs. \$300 each or all 3 for \$750. Ray Hinkle, PO Box 1127, Welcome NC (336) 731-4231.

FOR SALE - 1960 M-19, former Illinois Central track car. A-1 condition, has 12 V system, windshield, top, side and rear curtains, air horns, brake lights, boat seats, new paint. Asking \$1,500. All this car needs is gas. Contact: F. W. "Red" Richardson, 349 Gilbert St., N. Vernon IN 47265.

WANTED Info on how - to for a replacement roof for a pointed cab M-9 Fairmont. I believe there is a car like this out there in Motorcar land. It is (I think) a C & O car, with the iden. # M1671 on the front . I believe the car was at the "Almost Heaven" run in W. Va. last fall. If you can identify the owner or if you can share info. to re-do my roof, I'd appreciate it. Thanks: Ralph Smith, Plain City , Ohio (614) 879-6978

WANTED (Information) I have aquired an MT-14 that was formerly used by the Union Pacific Railroad in this area. It is in fairly good condition, but I would like any information as to where the serial number might be on this car. I have looked in most of the areas that would be most likely show the serial no. I also would like to know if this car MT-14 number 2356 would have had any seats other than one for the operator which appears to be in front and to the left of the engine. If you know of anyone who might have restored a similar car from the U.P. I would greatly appreciate any info. John R. Griggs 8521 West Pocatello Creek Road Pocatello, Idaho 83201

WANTED: Having recently joined NARCOA and Wolverine Motorcars, I have been on a lengthy search for a motorcar. I am interested in a Fairmont MT-14 with a Tomah cab and turntable, a Portec or a Canadian Beaver Car. I live in West Michigan and would like to find a car within a 400 mile radius. I have found the speeders archive a very valuable source of information especially with the search feature. If you have a car for sale or a lead on one of the above. Please e-mail me or contact me at (800) 678-6625 (9-5 EST) Thanks Paul Kik, Sr. pkik@worldnet.att.net

WANTED: American Bosch windshield wiper motor for 1980's vintage MT-19 A. Bob Harper - 2 Pleasant Ave. Corte Madrea, CA 94925 (415) 924-0170

WANTED: I am looking for a large "A" car that will probably never see that rails again because of engine or transmission problems. We are planning on converting this to a steam car Warren Riccitelli, Jr. North Providence, RI *** NERCA *** I use to be a Buffalo.

WANTED: A 6" or 8" trip gong. Bill Laird. Phone: (713) 877-7160

NOTICE - We periodically receive trucks equipped with Hi-Rail gear, 1 Ton thru 2 Ton. Also available 1 set of Hy-Rail gear off of a GMC C700 (2-Ton). Everett White, Monarch Truck Sales. 8321 Univ. Ave. Middleton WI 53562. Phone/fax (608) 831-6790.

WANTED: Motor car. Prefer MT-19 in ready to run condition but would consider other complete car or one needing work. Would like car and trailer combo. What do you have? Keith Mackey Days (954) 771-6969 Evening and weekend (561) 495-2850

WANTED: Parts and service manual for eight man Beaver Car w/ Lister diesel. Also, does anyone out there know where I can purchase parts for this car? This car is a little odd to me, I'm used to Fairmont cars w/ Ford or Onan engines! Contact Tom Falcon (727) 447-7900 or fax (727) 796-3132 Thanks!

INFORMATION NEEDED - Anyone who has a Fairmont used by the UP built in 1979 please let me know your serial number and road number, I am having trouble finding my road number. Grant Vogal, 5785 Voorhies Court, Plymouth CA 95669 grant@volcano.net



Excursions

Members who have organized meets are encouraged to advertise those events here. We will publish all notices received. Include details of the trip such as time schedule, total mileage, costs, restrictions and conditions for attending. State whether or not NARCOA rules will be in effect and whether insurance is required. Send meet notices to: Ernie Jeschke, SETOFF Editor - 4106 N. Adrian Hwy - Adrian, MI 49221

PLEASE NOTE - Advertisement of a meet in THE SETOFF does not constitute responsibility by NARCOA and/or its officers, or THE SETOFF and/or its editorial staff for meet conditions. Meet attendees must exercise caution in the observance of safety conditions and rules, and must accept full responsibility for themselves, their guests and their equipment when attending any meet.

NEW ENGLAND MOTOR CAR ASSOCIATION

NERCA, Inc. 39 Brookside Ave., North Providence, RI 02911 (401) 231-5640 evenings. Charter membership \$25.00, 1999 dues will be \$15.00.

July 10-11 Old Colony & Newport Railroad - Antique Motor Car Weekend. A weekend for the antique motorcars. Velocipedes, handcars, single cylinder motorcars and steam cars. Twelve miles along Narragansett Bay and starting in the hospitality city of Newport, RI. \$15.00 per car

July 24-25 Delaware and Ulster Railroad - in the Catskill Mountains of New York will host NERCA for excursions on their line and as a social for our members. Come and ride the D&U and its 3.5 percent grades. \$15.00

September 11 Maine Coast Railroad, Lower Road - From Brunswick, ME to Augusta, ME Riding inland along the Kennebec River for a seventy mile round trip. 30 car limit. If you missed this in the spring, don't miss it now. \$45.00

September 12 St. Lawrence & Atlantic Railroad - 70 miles each way. From Portland, ME to Mechanic Falls, ME; this trip will take us from the Atlantic Ocean following the route of the old Grand Trunk Western. 25 car limit \$40.00

October 16 Delaware & Ulster Railroad - (Arkville, NY) - After the foliage falls, again we set out on the D&U for crisp weather and great motorcaring. Approximately 36 miles round trip. \$10.00

October 17 Tioga Scenic Railroad - Owego to Harford, NY. Again we travel to central NY for the railroad that goes uphill into the Finger Lakes Region. Approximately 46 miles round trip. \$40.00

NORTH CENTRAL RAILCARS, LTD.

NCR Rules: All motorcar operators must be NARCOA rules-certified and must have insurance approved by NARCOA as a condition for registration at all NCR-sponsored excursions. All motorcars must be equipped with automatic brake lights.

Note: The railroads listed below do not sponsor the excursions that take place on their property. These railroads specifically disclaim any responsibility for injuries or damage sustained by anyone on account of such excursions.

June 12, 13 Wisconsin Central Railroad, Rhinelander WI to White Lake and Goodman and return. 40 car limit. 230 miles RT. Send check for \$150 payable to North Central Railcars to Pat Rock, 500 Sommers St., Stevens Point WI 54481. E-mail patrock@coredcs.com. For more information www.coredcs.com/~patrock/wcrhine.html.

August 21 Wisconsin and Southern Railroad, Janesville, WI to Fox Lake, IL including the Elkhorn, WI branch 40 car limit. 120 miles RT. Send check for \$75 payable to North Central Railcars to Craig Bluschke, 10916 Spring Creek Road, Blue Mounds, WI 53517. E-mail bluschke@engr.wisc.edu

FIRST IOWA DIVISION

Carl Schneider, Trip Coordinator, 1302 6th Ave. SE, Altoona, IA, 50009-2002. Ph. (515) 967-5181, motorcarl@raccoon.com Or Contact: Mark Kirkpatrick (515) 292-5027; Wayne Rimathe (515) 685-3019; Ed Rasmussen (402) 391-0524.

June 5: Nebraska Northeastern Railroad - FIRST TIME on this railroad! We will be setting on at Osmond, Nebraska, which is the railroad's headquarters, and going west to O'Neil, NE. This ride is approximately 60 miles each way for a grand total of 120 miles. Set on time will be at 6:30 AM with an 8:00 AM departure. There are no motels in Osmond, but there is a motel in Randolph - The

Cedar Motel (402) 337-0500. There are also many motels in the Sioux City area, approximately an hour east of Osmond. Due to the high charges from the railroad for this ride, the charge will be \$45 per car. Please come join us for the first trip on the new railroad.

June 19: Nobles Rock Railroad - We will be starting this ride in Luverne, Minnesota and run east to Worthington, MN and then back west to the South Dakota state line and return to Luverne. Mileage is 90 miles round trip. Set on time will be 7:00 AM with an 8:30 AM departure. Cost will be \$35 per car. There is a Super 8 Motel in Luverne (800) 800-8000.

July 3: Dakota Southern Railroad - We will tentatively be riding from Chamberlain, SD west to Reliance across the beautiful Missouri River bridge and then east to Mitchell, SD. Mileage is about 82 miles each way. Set on time will be at 6:30 AM with an 8:00 AM departure. Cost is \$30 per car. There is a Super 8 motel in Chamberlain.

July 18: (Note: Date Change) Iowa Northern Railroad - We will be riding this line from Greene, Iowa to Manly and return. Then you will have a choice of continuing on to Cedar Falls on the rails or take a boat trip up the river to the Paddle Inn for a delicious meal and then return by boat to Greene. Cost of this motorcar trip will be \$30 per car. Cost of the boat ride and meal is unknown at this time, but must be paid for in advance. Information will be sent to those interested in the boat ride. There are no motels in Greene. The nearest motels are in Mason City or Charles City.

July 31: Nebraska Central Railroad - We will be riding from Columbus, Nebraska to Norfolk, NE, which is a new piece of track for us. The ride will be 92 miles round trip. Our set on point will be on the north edge of Columbus beginning at 6:30 AM with an 8:00 AM departure. Cost of this ride will be \$40 per car. There is a Super 8 Motel in Columbus (800) 800-8000.

August 1: Fremont & Elkhorn Valley Railroad - This will be a nice track to ride on your way home from the Nebraska Central. We will run from Fremont, NE to Hooper, NE. Our set on time will be 7:00 AM, with an 8:30 AM departure from the FEVR depot in the western part of Fremont. We must be clear of the tracks in Fremont by 12:30 PM because a train is scheduled to depart after we return. Cost of this ride is \$20 per car. There is a Super 8 Motel in Fremont (800) 800-8000.

August 7: Chillicothe Brunswick Rail Authority - Ride this ex-Wabash line from Chillicothe, MO to Burnswick, MO. We will go through two game preserves and have lunch under the Kansas City to Chicago mainline of the BNSF. Mileage is 70 miles round trip. Cost of the ride is \$30 per car. We will begin setting on at 6:30 AM with an

8:00 AM departure. There is a Super 8 Motel in Chillicothe. (800) 800-8000.

August 21: Elliott Grain Company - This line is owned by the Elliot Grain Company in Elliot, Iowa and runs south to Red Oak, Iowa. We are able to run the first 9 miles on this scenic track which runs along the Nishnabotna River. We will ride the line several times during the day. Our noon meal will be in the city park in conjunction with the town's annual celebration. Set on will be at 8:30 AM with a 9:30 AM departure for the first run. Cost of this ride is \$15 per car. Motels are available in Red Oak and Atlantic.

September 5: Nebkota Railroad - We will be riding both directions from Gordon, Nebraska on this last remaining piece of the former CNW Cowboy Line. The line runs to Chadron on the west end and to Merriman on the east for a grand total of about 160 miles. We will also have a night run towards Merriman. Set on time will be 6:30 AM with an 8:00 AM departure. Cost of this trip is \$30 per car. Motels in Gordon: Hacienda Motel (308) 282-1400, Jeffco Motel (800) 252-1319.

September 19: Appanoose Co. Railroad - This popular ride will again be held from Centerville, Iowa to Albia in conjunction with the Moravia, Iowa town celebration. Our noon meal will be a barbecue at the restored Wabash depot with the First Iowa Division paying \$3 of cost of the barbecue per person. We will set on in Centerville near the water tower in the southeast part of town at 6:30 AM with an 8:30 AM departure. Cost of this ride will be \$30 per car. Motels in Centerville: Super 8 Motel (800) 800-8000, Motel 60 (800) 437-7271.

October 9: (Tentative) Fort Leonard Wood Army Base - This popular ride through the Missouri scenery will again be held to take advantage of the changing Fall colors. Set on time will be 11:30 AM with a 1:00 PM departure for the first run. Two run are planned which are 40 miles round trip per run. Super 8 Motel in Waynesville exit on I-44 (800) 800-8000; other motels at the St. Robert exit near the army base.

November 6: Boone & Scenic Valley Railroad - Our season closer, complete with a cookout (inside where it's warm) and Halloween decorations. We will be setting on a 8:00 AM with a 10:00 AM departure, running the line several times during the day. NARCOA insurance is not necessary for this ride, but membership in the Boone Railroad Historical Society is required at \$25 per year. The ride will also cost \$10 per car. Super 8 Motel in Boone, Iowa (800) 800-8000.

The First Iowa Division and its officers assume no responsibility for any property damage or personal injury which may occur on a First Iowa sponsored excursion.

GREAT LAKES RAILCARS

July 27 - 29: Algoma Central - The three day trip from Sault Ste Marie to Oba is full.

July 31: Searchmont, Ont. to Eton, Ont. - 178 miles round trip. \$60 per car. NARCOA Insurance Required. There is still room for more on this trip. For reservations and more information call Stan Conyer at (812) 342-0565.

August 14: Coopersville and Marne Railroad - Coopersville to Marne and then east to Grand Rapids. Sponsored by the Coopersville and Marne Railroad. Call Brad Anderson at (616) 798-7810 for more details.

August 15: The Sweet Line - Carson City, MI to Middleton, MI, 25 miles round trip. Several trips will be made, starting at 10:00 AM. Cost is \$10 cash on the day, no registration necessary. Sponsored by Dave Stroebe. Call Dave at (616) 773-7980 for more details.

September 19: (Tentative) Kankakee Beaverville & Southern - Sponsored by Great Lakes Railcars. NARCOA Insurance Required. Call Mike Mitzel at (815) 264-7979 for more details.

October 2: Southern Michigan Railroad Society - Clinton, MI to Raisin Center, MI - 25 miles round trip. Several trips are planned. You must be a member of the SMRS for at least one month before the trip. (annual membership is \$15). Sponsored by Dave Stroebe. Call Dave for more details.

October 3: TSBY - Cadillac to Yuma in the morning and then Cadillac to Walton Junction in the afternoon. 80 miles in total. Sponsored by Great Lakes Railcars. NARCOA Insurance required with 20 car limit. To register, send \$60 to Jeremy Winkworth, 1701 West B Ave., Plainwell, MI. Make check payable to Great Lakes Railcars.

CENTRAL PENNSYLVANIA WEEKEND

July 17 and 18 Saturday - Ride the 86 miles of the North Shore Railroad, including the former lines of the Reading and Erie Lackawanna Railroads, from Northumberland to Borwick and return.

Sunday - Ride the 50 miles of the Shamokin Valley Railroad, former Reading and Pennsylvania Railroads, from Sunbury to Shamokin and return.

Saturday night bonus - The Central PA Chapter NRHS will be your host at their station in White Door. They will be serving a meal and show slides of local railroads. They will provide caboose rides. \$10.00 of the registration fee will be donated to the Chapter for ongoing station upkeep. Registration \$60.00 for the weekend. NARCOA Insurance Required. NARCOA Operating and Safety Rules apply. Larry Maynard RR1 Box 351, New Columbia, PA 17856 Questions call (570) 538-9050 before 10:00 p.m.

North American Railcar Operators Association

(NARCOA)

Officers:

President - Stan Conyer
Vice President - Mike Paul
Secretary - Joel Williams
Treasurer - Tom Norman

Board of Directors by Area

Area 1

(ME, NH, VT, NY, MA, CT, RI)
Dick Wilhelm
P.O. Box 209
Bearsville, NY 12409

Area 7

(ND, SD, NB, IA)
Carl Schneider
1302 6th Ave. SE.
Altoona, IA 50009

Area 2

(NJ, PA, DE, MD)
Joel Williams
Box 82
Greendell, NJ 07839

Area 8

(Canada)
Jeff Robertson
954 Kirkland Place
Kamloops, BC V2B 3Y6

Area 3

(IN, OH, MI)
Stan Conyer
9333 West State Road, 46
Columbus, IN 47201

Area 9

(CO, KS, MO, AR, LA, TX, OK)
Jim McKeel
9742 Yosemite Ct.
Wichita, KS 67215

Area 4

(WV, VA, KY, NC, SC, TN)
Ed Taylor
4297 Royal Oaks
Lincolnton, NC 28092

Area 10

(WA, OR, ID, MT, AK, WY)
Tom Norman
1047 Terrace View Drive
Alberton, MT 59820

Area 5

(MS, AL, GA, FL)
Jack Whitt
1018 W. Dixie Ave.
Leesburg, FL 34748

Area 11

(CA, NV, UT, AZ, NM, HI)
Gil Dominguez
8672 Fairmont Way
Fair Oaks, CA 95628

Area 6

(MN, WI, IL)
Mike Paul
1780 Maricopa Dr.
Oshkosh, WI 54904

Recording Secretary

Director at Large (non-voting)
Ron Zammit
469 Campana
Arroyo Grande, CA 93420

Director at Large (non-voting)
Dave Verzi
10059 Aldridge Dr.
Columbia Station, OH 44028

Committee Chairs:

Insurance: Tom Norman

Judiciary: Jack Whitt

Safety and Rules: Mike Mitzel

FRA and Railroad Liaison: Ron Zammit

THE SETOFF

Ernie Jeschke
4106 N. Adrain Hwy.
Adrian, MI 49221

NOMINATIONS (ELECTIONS)

Carl Anderson
1330 Rosedale Ln.
Hoffman Estates, IL 60195

OPERATIONS

Hank Brown
622 Oak St.
Cottage Grove, WI 53527

LEGAL FORMS

Mark Springer
143 N. Arcadia
Wichita, KS 67212

OPERATOR CERTIFICATION TEST

Mike Mitzel
P.O. Box 79
Waterman, IL 60556

NARCOA Licensed Radio Call Sign WPHT745 - 151.625 MHz